

# Цифровые магнитные мешалки, нагревательные электроплиты SHP-300, SHP-200, SHP-400, ST-300, премиальные HP-400, ультратонкие ST-200D-UT, HP-200, HP-300, инфракрасные плиты нагревательные блоки

## Технические характеристики

По вопросам продаж и поддержки обращайтесь:

Алматы (727)345-47-04  
Ангарск (3955)60-70-56  
Архангельск (8182)63-90-72  
Астрахань (8512)99-46-04  
Барнаул (3852)73-04-60  
Белгород (4722)40-23-64  
Благовещенск (4162)22-76-07  
Брянск (4832)59-03-52  
Владивосток (423)249-28-31  
Владикавказ (8672)28-90-48  
Владимир (4922)49-43-18  
Волгоград (844)278-03-48  
Вологда (8172)26-41-59  
Воронеж (473)204-51-73  
Екатеринбург (343)384-55-89

Иваново (4932)77-34-06  
Ижевск (3412)26-03-58  
Иркутск (395)279-98-46  
Казань (843)206-01-48  
Калининград (4012)72-03-81  
Калуга (4842)92-23-67  
Кемерово (3842)65-04-62  
Киров (8332)68-02-04  
Коломна (4966)23-41-49  
Кострома (4942)77-07-48  
Краснодар (861)203-40-90  
Красноярск (391)204-63-61  
Курск (4712)77-13-04  
Курган (3522)50-90-47  
Липецк (4742)52-20-81

Магнитогорск (3519)55-03-13  
Москва (495)268-04-70  
Мурманск (8152)59-64-93  
Набережные Челны (8552)20-53-41  
Нижний Новгород (831)429-08-12  
Новокузнецк (3843)20-46-81  
Ноябрьск (3496)41-32-12  
Новосибирск (383)227-86-73  
Омск (3812)21-46-40  
Орел (4862)44-53-42  
Оренбург (3532)37-68-04  
Пенза (8412)22-31-16  
Петрозаводск (8142)55-98-37  
Псков (8112)59-10-37  
Пермь (342)205-81-47

Ростов-на-Дону (863)308-18-15  
Рязань (4912)46-61-64  
Самара (846)206-03-16  
Санкт-Петербург (812)309-46-40  
Саратов (845)249-38-78  
Севастополь (8692)22-31-93  
Саранск (8342)22-96-24  
Симферополь (3652)67-13-56  
Смоленск (4812)29-41-54  
Сочи (862)225-72-31  
Ставрополь (8652)20-65-13  
Сургут (3462)77-98-35  
Сыктывкар (8212)25-95-17  
Тамбов (4752)50-40-97  
Тверь (4822)63-31-35

Тольятти (8482)63-91-07  
Томск (3822)98-41-53  
Тула (4872)33-79-87  
Тюмень (3452)66-21-18  
Ульяновск (8422)24-23-59  
Улан-Удэ (3012)59-97-51  
Уфа (347)229-48-12  
Хабаровск (4212)92-98-04  
Чебоксары (8352)28-53-07  
Челябинск (351)202-03-61  
Череповец (8202)49-02-64  
Чита (3022)38-34-83  
Якутск (4112)23-90-97  
Ярославль (4852)69-52-93

Россия +7(495)268-04-70

Казахстан +7(727)345-47-04

Беларусь +(375)257-127-884

Узбекистан +998(71)205-18-59

Киргизия +996(312)96-26-47

эл.почта: [cen@nt-rt.ru](mailto:cen@nt-rt.ru) || сайт: <http://coleparmer.nt-rt.ru/>

# Stuart® Digital Round-Top Hot Plate, Stirrer, and Stirring Hot Plate



## Innovative fingertip control even while wearing gloves

- Get precise digital control of heating and stirring
- Advanced brushless motor provides quiet, worry-free operation
- Sealed casing keeps spills away from interior electronics
- Set a safety temperature limit to eliminate damage to sample from overheating
- Hot top warning light protects you from accidental burns

If square isn't your style, select one of our Stuart round-top units. They feature a unique control pad that allows you to set all operations by just a touch of your fingertip. The bright LCD shows both set and real-time parameters which are lockable to prevent changes during use. Optimal heating is produced by an integrated temperature sensor and dual PID control that rapidly heats plate and maintains desired temperature. Reverse stirring mode switches the stirring direction every 45 seconds for thorough mixing. Built-in timer can be set for up to 9 hours or continuous operation for each function.

## Ordering Information



Top plate		Max temperature	Speed range	Max stirring capacity	Power			Catalog number
Dimensions	Material				VAC	Hz	Watts	
Hot plate								
50/8" (13.5 cm) dia	Ceramic-coated aluminum	644 ° F (340 ° C)	—	—	115 220	50/60	600	ML-04661-23 ML-04661-24
Stirrer								
50/8" (13.5 cm) dia	Ceramic-coated aluminum	—	100 to 1800 rpm	20 L	115 220	50/60	—	ML-04661-29 ML-04661-30
Stirring hot plate								
53/6" (13.5 cm) dia	Ceramic-coated aluminum	644 ° F (340 ° C)	100/101800 rpm	20 L	115 220	50/60	600	ML-04661-45 ML-04661-46

# Cole-Parmer® SHP-300 Series Digital Stirring Hot Plates



Digital stirring hot plates provide accurate stirring and temperature control

- Large 7-segment digital display shows set and actual temperature
  - 'Hockey stick' LED array displays speed
  - Hot warning light flashes when plate temperature is above 50 °C, even if unit is unplugged
  - Durable front panel resists spills and chemicals
  - BioCote® antimicrobial protection is built in for a cleaner, more hygienic product
  - Use optional digital temperature controller for precise sample temperature control
- Ideal for day-to-day use by scientific professionals and students, the Cole-Parmer digital stirring hot plates offer precise stirring speed and temperature control of your samples. Powerful magnets provide consistent stirring speeds and the ability to mix large volumes up to 15 L.



The simple body design allows spillages to be easily deflected from the user. Front control panel resists spills and the glass is chemically toughened for extra resilience. In addition, units feature BioCote® antimicrobial protection which reduces the presence of odor and stain causing microbes such as bacteria, mold, and fungi on the product surface by up to 99.99%.

The digital interface indicates the set and actual temperature on the 7-segment digital display. Stirring speed is displayed by a 'hockey stick' LED array with the lights progressively illuminating to represent the speed range.

To achieve accurate sample temperature control up to 200 °C (392 °F), a digital temperature controller (sold separately) can be connected to the rear of the unit.

item	Max Temperature (° F)	Power (VAC)	Description
<div data-bbox="124 253 258 378" data-label="Image"> </div> <div data-bbox="134 445 316 481" data-label="Text"> <p>EW-04806-36</p> </div>	<p>617</p>	<p>120</p>	<p>SHP-300-BS-120 Digital Stirring Hot Plate, 6" X 6", Aluminum, Blue; 120 VAC</p>
<div data-bbox="124 770 258 896" data-label="Image"> </div> <div data-bbox="266 770 448 806" data-label="Text"> <p>EW-04806-37</p> </div>	<p>617</p>	<p>230</p>	<p>SHP-300-BS Digital Stirring Hot Plate, 15 x 15 cm, Aluminum, Blue; 230 VAC</p>
<div data-bbox="124 1288 258 1413" data-label="Image"> </div> <div data-bbox="266 1288 448 1323" data-label="Text"> <p>EW-04806-38</p> </div>	<p>617</p>	<p>120</p>	<p>SHP-300-WS-120 Digital Stirring Hot Plate, 6" X 6", Aluminum, White; 120 VAC</p>

item	Max Temperature (° F)	Power (VAC)	Description
 EW-04806-39	617	230	SHP-300-WS Digital Stirring Hot Plate, 15 x 15 cm, Aluminum, White; 230 VAC
 EW-04806-42	842	120	SHP-300-BC-120 Digital Stirring Hot Plate, 6" X 6", Ceramic, Blue; 120 VAC
 EW-04806-43	842	230	SHP-300-BC Digital Stirring Hot Plate, 15 x 15 cm, Ceramic, Blue; 230 VAC

item	Max Temperature (° F)	Power (VAC)	Description
 EW-04806-44	842	120	SHP-300-WC-120 Digital Stirring Hot Plate, 6" x 6", Ceramic, White; 120 VAC
 EW-04806-45	842	230	SHP-300-WC Digital Stirring Hot Plate, 15 x 15 cm, Ceramic, White; 230 VAC

# Cole-Parmer® SHP-200 Series Undergrad Digital Stirring Hot Plates



- Easy-to-read display provides repeatable and accurate results every time
- Compact, stackable design takes up less benchtop and storage space
- Hot warning light remains on even when unplugged
- Built with tough aluminum casing for longevity
- Designed to prevent accidental spillage on control panel
- IP32 rated for water and dust resistance
- BioCote® antimicrobial protection is built in for a cleaner, more hygienic product
- Use optional temperature controller for precise sample temperature control

Designed with microprocessor-controlled dual thermocouples, these stirring hot plates offer you accurate temperature control and protection from overheating. Actual surface temperature is displayed in real time on an easy-to-read digital screen. Powerful magnets and motor provide you with stirring speeds of up to 2000 rpm and mixing capability of up to 15 L of liquid. The square plate design allows you flexibility of vessel sizes and combinations.

To keep you safe, a “hot” warning light flashes whenever the plate surface temperature is above 50 °C and continues to flash until the temperature drops below 50 °C, even when unplugged.

These stirring hot plates feature BioCote® antimicrobial protection which reduces the presence of odor and stain causing microbes such as bacteria, mold, and fungi on the product surface by up to 99.99%.

All models include an integral fitting for a retort rod and allow the retort base to slide underneath. For convenience and power saving, the units are built with a standard mains switch. To achieve accurate sample temperature control up to 200 °C (392 °F), a temperature controller (sold separately) can be connected to the unit.

•

item	Max Temperature (°C)	Power (VAC)	Top Plate Material
<div data-bbox="124 253 258 378" data-label="Image"> </div> <div data-bbox="134 445 316 481" data-label="Text"> <p>EW-04807-62</p> </div>	450	230	Glass ceramic
<div data-bbox="124 685 258 810" data-label="Image"> </div> <div data-bbox="134 878 316 913" data-label="Text"> <p>EW-04807-63</p> </div>	450	120	Glass ceramic
<div data-bbox="124 1117 258 1243" data-label="Image"> </div> <div data-bbox="266 1117 448 1153" data-label="Text"> <p>EW-04807-64</p> </div>	325	230	Coated aluminium
<div data-bbox="124 1550 258 1675" data-label="Image"> </div> <div data-bbox="134 1742 316 1778" data-label="Text"> <p>EW-04807-65</p> </div>	325	120	Coated aluminium



# Cole-Parmer® HP-300 Series Digital Hot Plates



Digital hot plates provide accurate temperature control

- Large 7-segment digital display shows set and actual temperature
- Hot surface warning light flashes when plate temperature is above 50 °C
- Durable front panel resists spills and chemicals
- BioCote® antimicrobial protection is built in for a cleaner, more hygienic product
- Use optional digital temperature controller for precise sample temperature control



Ideal for day-to-day use by scientific professionals and students, the Cole-Parmer digital hot let you accurately set temperature with the LED display. A hot warning light protects you from accidental burns; it flashes when surface temperature is above 50 °C and remains on even if the unit is turned off or unplugged.

The simple body design allows spillages to be easily deflected from the user. Front control panel resists spills and the glass is chemically toughened for extra resilience. In addition, units feature BioCote® antimicrobial protection which reduces the presence of odor and stain causing microbes such as bacteria, mold, and fungi on the product surface by up to 99.99%.

The digital interface indicates the set and actual temperature on the 7-segment digital display. To achieve accurate sample temperature control up to 200 °C (392 °F), a digital temperature controller (sold separately) can be connected to the rear of the unit

item	Power (VAC)	Top Plate Length (in)	Top Plate Material
  EW-04806-24	120	6	Aluminum
 EW-04806-25	230	6	Aluminum
 EW-04806-26	120	6	Aluminum

item	Power (VAC)	Top Plate Length (in)	Top Plate Material
 EW-04806-27	230	6	Aluminum
 EW-04806-30	120	6	Ceramic
 EW-04806-31	230	6	Ceramic


item	Power (VAC)	Top Plate Length (in)	Top Plate Material
 EW-04806-32	120	6	Ceramic
 EW-04806-33	230	6	Ceramic


# Cole-Parmer® HP-200 Series Large-Capacity Infrared Hot Plates



Efficient infrared heater saves you time and energy

- Large plate surface is ideal for heating large volumes of liquid
  - Ceramic top stays cool around the edges, preventing burns
  - Be safe—flashing light warns when top plate is hot
  - BioCote® antimicrobial protection is built in for a cleaner, more hygienic product
- This hot plate features an efficient, 900-watt infrared heater that can boil a liter of water over 30% faster than a conventional, 1200-watt ceramic hot plate. "Hot" warning light flashes when the plate temperature is above 50 °C and remains lit even when the hot plate is turned off.
- Units feature BioCote antimicrobial protection which reduces the presence of odor and stain causing microbes such as bacteria, mold, and fungi on the product surface by up to 99.99%.

item	Max Temperature (° F)	Power (VAC)	Top Plate Length (in)
 EW-04807-84	842	230	12

item	Max Temperature (° F)	Power (VAC)	Top Plate Length (in)
 EW-04807-85	842	120	12



## Cole-Parmer® SHP-200 Series Large Capacity Infrared Stirring Hot Plates

Efficient infrared heater saves you time and energy

- Large plate surface is ideal for heating large volumes of liquid
  - Ceramic top stays cool around the edges, preventing burns
  - Be safe—flashing light warns when top plate is hot
  - BioCote® antimicrobial protection is built in for a cleaner, more hygienic product
- Efficient infrared heater combined with a stirrer delivers faster, evenly heated fluids. A 900-watt infrared heater can boil a liter of water over 30% faster than a conventional, 1200-watt ceramic hot plate. Rare earth magnets provide powerful stirring—up to 15 liters—and feedback control from 100 to 1500 rpm.

"Hot" warning light flashes when the plate temperature is above 50 °C and remains lit even when the unit is turned off.

Units feature BioCote antimicrobial protection which reduces the presence of odor and stain causing microbes such as bacteria, mold, and fungi on the product surface by up to 99.99%.

item	High Speed (rpm)	Max Temperature (° F)	Top Plate Length (in)
 EW-04807-86	1500	842	12
 EW-04807-87	1500	842	12

# Cole-Parmer® elements™ Modular Magnetic Stirrer



## Fully customizable-create any configuration you need

- Attach up to 10 stir plate modules to a single controller
- Use simple touch-and-slide bar to set stirring speed and timer
- View real-time parameters on LCD
- Control module features speed display, reverse stirring mode, and timer
- Corrosion-resistant glass stir top is easy to clean

This unique multiposition stirrer is ideal for anyone who needs more stirring equipment but has minimal work space. Its modular design allows you to configure the stir plate modules to meet your specific space requirements. You decide how many stir plates to attach (up to 10) based on your mixing needs. Through direct USB connection or with the included cables, it is simple to attach or remove a stir plate and configure to suit your work area. Each stir plate edge lights up to allow for accurate positioning of the vessel. Two stirring options allow a choice between one direction or reversing every 45 seconds for thorough mixing. Built-in timer can be set for up to 9 hours or continuous operation.

**Kit includes:** control module, four stir plate modules, USB cords, power cord and AC adapter.

# Cole-Parmer® elements™ Ultra-Thin Magnetic Stirrer



## Ultra-slim design saves valuable space

- Use simple touch-and-slide bar to set stirring speed and timer
- View real-time parameters with LCD
- Reverse stirring mode allows for thorough mixing
- Set built-in timer for up to 9 hours or continuous operation

Our ultra-thin magnetic stirrer will fit perfectly in any lab, large or small. Not only will this ultra-flat stirrer save space on your benchtop, you can also enjoy quieter stirring. This ultra-thin stirrer is designed with advanced magnetic coil technology that provides lighter, quieter, and wear-free operation with no moving parts. The speed, reverse mode, and timer settings will be saved automatically when the unit is turned off and will automatically be restored the next time you turn the unit on. Two stirring options allow you to choose between one direction or reversing every 45 seconds for thorough mixing. The unique design makes the stirrer thinner and lighter, so you can easily store it when not in use.

**Includes:** stirring bar, power cord and AC adapter.

## Ordering Information



Top plate	Speed range	Max stirring capacity	Power (VAC, Hz)	Catalog number
Polyester, 4" (10.2 cm) dia	20 to 1500 rpm	1 L	100 to 240, 50/60	<a href="#">ML-84003-71</a>





## Cole-Parmer® Hot Plates, Stirrers & Hot Plate Stirrers - HP-200, ST-200 and SHP-200

- The range of Undergrad hotplates includes dedicated hotplates, stirrers, and combination hotplate stirrer models
- Available in a choice of coated metal or ceramic tops.
- Allows flexibility of vessel sizes and combinations; e.g. four 250ml beakers can easily fit on the hotplate surface at the same time
- BioCote® Antimicrobial Protection included on all products



Hot Plate Stirrer SHP-200

# Cole-Parmer® Hot Plates, Stirrers & Hot Plate Stirrers - HP-200, ST-200 and SHP-200

## Safety In Design

For safety, all units are designed to direct spills away from the user controls. For greater convenience and power saving, units are built with a standard mains switch (excluding stir only models). All units are incorporated with microprocessor-controlled dual thermocouples to ensure accurate temperature control and protection from overheating.

## Power in Performance

Powerful magnets and motors allow remarkable stirring speeds (up to 2000 rpm) and mixing of large volumes of liquids (up to 15 L).

## Temperature Controller

All hotplate models are compatible with the Stuart HP-200/SHP-200 temperature controller. Together with your Undergrad hotplate, the temperature controller ensures accurate temperature control of aqueous or oil based samples, up to a maximum of 200°C. The HP-200/SHP-200 temperature controller is automatically detected when plugged in.

## Protected by BioCote®

BioCote® utilises silver ion, copper, zinc and organic additives to provide built-in antimicrobial protection; so the Cole-Parmer Stuart range can support a safer and more hygienic laboratory environment. By reducing levels of bacteria, mould and fungi, your BioCote protected piece of equipment can help reduce the risk of cross-contamination and consequently disease transmission within the lab.

HP-200-S



ST-200-S



SHP-200-S



SHP-200D-S



HP-200-C



ST-200-C



SHP-200-C



SHP-200D-C



Temperature Controller HP-200/SHP-200



## Technical Specification - Hotplate Stirrer

					Hotplates		Stirrers	
Specification	SHP-200-S	SHP-200D-S	SHP-200-C	SHP-200D-C	HP-200-S	HP-200-C	ST-200-S	ST-200-C
Plate material	Coated Aluminium/Silicon	Coated Aluminium/Silicon	Glass Ceramic	Glass Ceramic	Coated Aluminium/Silicon	Glass Ceramic	Stainless Steel	Glass Ceramic
Plate dimensions mm	150 x 150	150 x 150	150x150	150x150	150 x 150	150 x 150	150 x 150	150 x 150
Heated area mm	150x150	150 x 150	120x120	120x120	150 x 150	120 x 120	-	-
Heater power, watt	700	700	500	500	700	500	-	-
Max plate temp °C	325	325	450	450	325	450	-	-
Stirrer speed rpm	100- 2000	100 - 2000	100- 2000	100-2000	-	-	100-2000	-
Max stirring capacity L	15	15	15	15	-	-	15	-
Compatible with SCT2	Yes	Yes	Yes	Yes	Yes	Yes	No	No
Control accuracy w/ SCT2, °C	±0.5	±0.5	±0.5	±0.5	±1 °C	±1 °C	-	-
Dimensions (w x d x h), mm	180 x 255 x 122	180 x 255 x 122	180 x 255 x 122	180 x 255 x 122	180 x 255 x 122	180 x 255 x 122	180 x 255 x 122	180 x 255 x 122
Net weight, kg	31	31	31	31	2.5	2.5	2.4	2.4
Power, watt	750	750	550	550	700	500	50	50
Electrical supply	120V, 60Hz or 230V, 50Hz,	120V, 60Hz or 230V, 50Hz,	120V, 60Hz or 230V, 50Hz,	120V, 60Hz or 230V, 50Hz,	120V, 60Hz or 230V, 50Hz,	120V, 60Hz or 230V, 50Hz,	120V, 60Hz or 230V, 50Hz,	120V, 60Hz or 230V, 50Hz,
IP rating	32	32	32	32	32	32	32	32
Digital display version	N	y	N	y	-	-	-	-

## Ordering Information

Description	Ordering Number	Model No.
Stirrer/hotplate, ceramic plate, 230V / 50Hz	04807-58	SHP-200-C
Stirrer/hotplate, ceramic plate, 120V / 60Hz	04807-59	SHP-200-C-120
Digital Stirrer/hotplate, ceramic plate, 230V / 50Hz	04807-62	SHP-200D-C
Digital Stirrer/hotplate, ceramic plate, 120V / 60Hz	04807-63	SHP-200D-C-120
Stirrer/hotplate, coated aluminium plate, 230V / 50Hz	04807-60	SHP-200-S
Stirrer/hotplate, coated aluminium plate, 120V / 60Hz	04807-61	SHP-200-S-120
Digital Stirrer/hotplate, coated aluminium plate, 230V / 50Hz	04807-64	SHP-200D-S
Digital Stirrer/hotplate, coated aluminium plate, 120V / 60Hz	04807-65	SHP-200D-S-120
Hotplate, ceramic plate, 230V / 50Hz	04807-50	HP-200-C
Hotplate, ceramic plate, 120V / 60Hz	04807-51	HP-200-C-120
Hotplate, coated aluminium plate, 230V / 50Hz	04807-52	HP-200-S

## Ordering Information

Description	Ordering Number	Model No.
Hotplate, coated aluminium plate, 120V / 60Hz	04807-53	HP-200-S-120
Stirrer, ceramic plate, 230V / 50Hz	04807-54	ST-200-C
Stirrer, ceramic plate, 120V / 60Hz	04807-55	ST-200-C-120
Stirrer, stainless steel plate, 230V / 50Hz	04807-56	ST-200-S
Stirrer, stainless steel plate, 120V / 60Hz	04807-57	ST-200-S-120
Temperature Controller	04807-90	HP-200/SHP-200
Retort rod, 600 x 12 mm diameter	04805-91	HP-200/SHP-200
Probe holder for rod	04807-91	HP-200/SHP-200
PTFE coated temperature probe	04805-93	HP-200/SHP-200

# Cole-Parmer®

## Cole-Parmer Hot Plates and Stirrers

- Choice of top plate materials; glass ceramic, aluminum, stainless steel
- Accurate and repeatable temperature and speed control
- Protected by BioC,Qte® for a safer, more hygienic lab
- 3-year warranty



## The Cole-Parmer Advantage

Since its founding in 1955, Cole-Parmer's mission has been to provide the best possible customer service and technical support while offering the scientific equipment and supplies you need. Cole-Parmer is represented globally in more than 80 countries and 160 markets.

We proudly offer products and instrumentation that supports our mission to help make the world cleaner, safer, and healthier for people everywhere.

Serving professionals in biopharma, environmental and life sciences.

## Hot Plates and Stirrers Product Range

The Cole-Parmer product range includes dedicated hot plates, stirrers and combination hot plate and stirrer models, which are available in a choice of metal or ceramic tops. The square design of the models allows flexibility of vessel size. Round top plates provide an even heating surface with greater efficiency. Square top plates lose some heat around edges and corners.





## Features of Hot Plates and Stirrers



### Temperature Controller

Most hot plate models are compatible with the SCT2 temperature controller. Together with your Undergrad hotplate, the SCT2 ensures accurate temperature control of aqueous or oil-based samples, up to a maximum of 200 °C. The SCT2 temperature controller is automatically detected when plugged in.



### Temperature Control

Rest assured that the temperature of the sample is precisely controlled. A range of accessories are also available for the complete setup of controllers, temperature probes and stirring hot plates.



### Protected by BioCote®

BioCote utilizes silver ion, copper, zinc, and organic additives to provide built-in antimicrobial protection; so, the Cole-Parmer range can support a safer and more hygienic laboratory environment. By reducing levels of bacteria, mold and fungi, your BioCote protected piece of equipment can help reduce the risk of cross-contamination and consequently disease transmission within the lab.

Note: BioCote applies only to 400 series, 300 series, 200 series Undergrad, 200 series Large Capacity, and 200 series Large Capacity Infrared models.

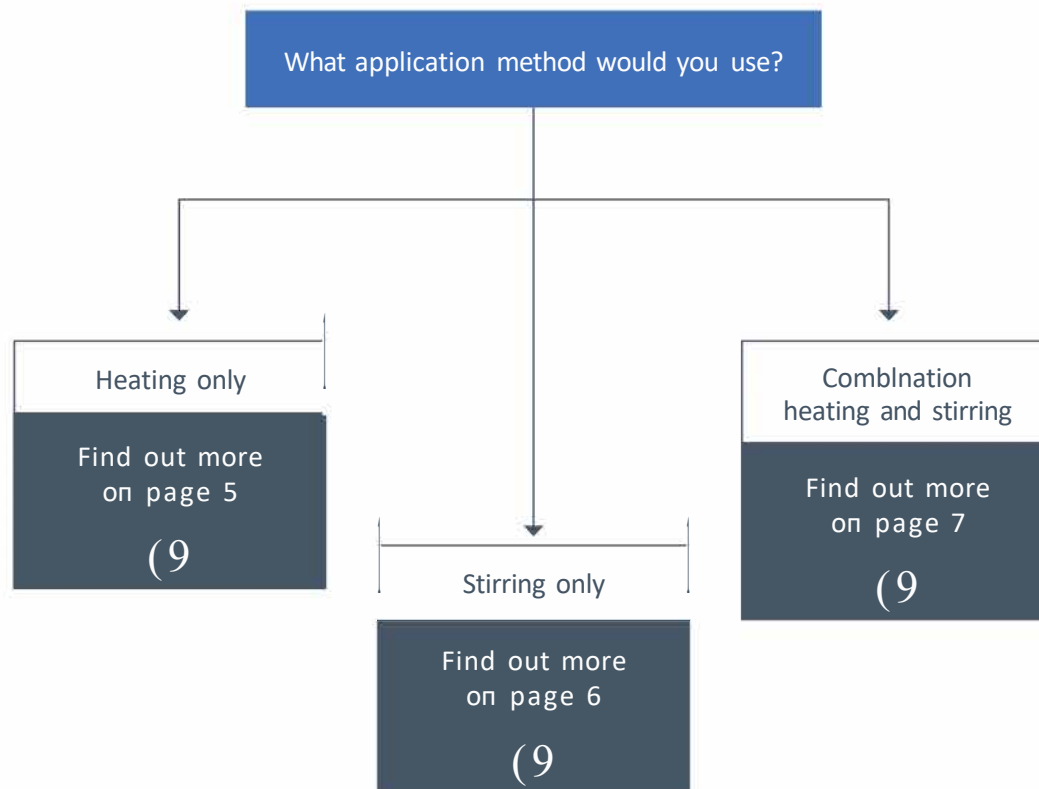
## Selecting the Right Top Plate for Your Applications

**Glass Ceramic** - surface provides excellent chemical resistance; easy-to-clean with thermal properties that allow very high plate temperatures, while ensuring the edges stay cooler, reducing the chance of accidental burns. The white surface ensures good visibility of any changes in sample color, for example, during titration reactions.

**Ceramic Coated Aluminum/Silicon Alloy** - offers robustness. The thin ceramic coating provides added chemical resistance, while the 700 W element allows rapid heating to desired temperature. Ceramic coated aluminum top plates have been designed for very accurate top plate temperature. Ideal for microarrays, in-situ hybridization and specialized electronics applications.

**Stainless Steel** - strong stainless steel surface aids accurate stirring. Unlike aluminum, it does not produce eddy currents and ensures robust coupling and a powerful stirring action.

### Selection Guide

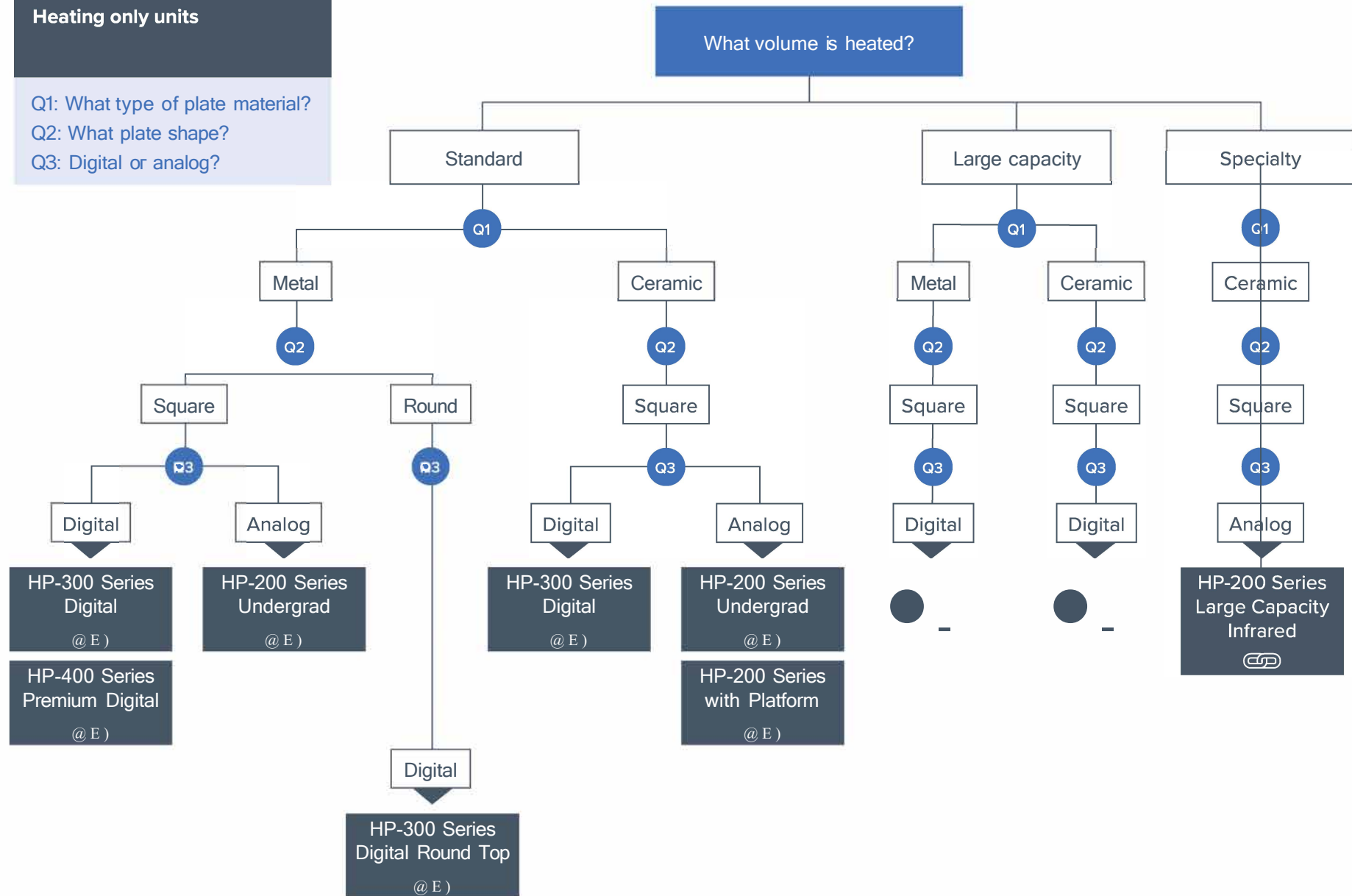


## Heating only units

Q1: What type of plate material?

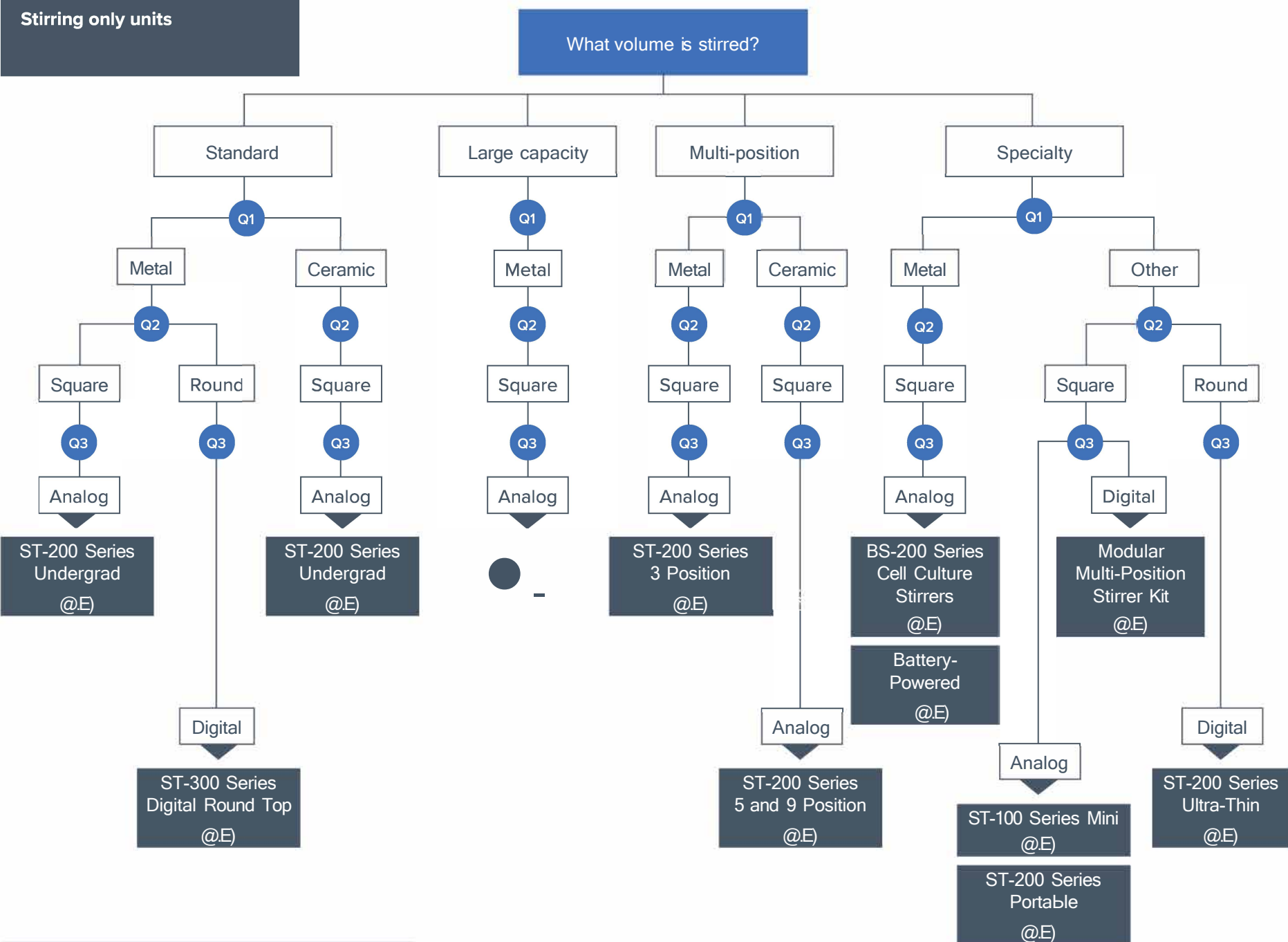
Q2: What plate shape?

Q3: Digital or analog?

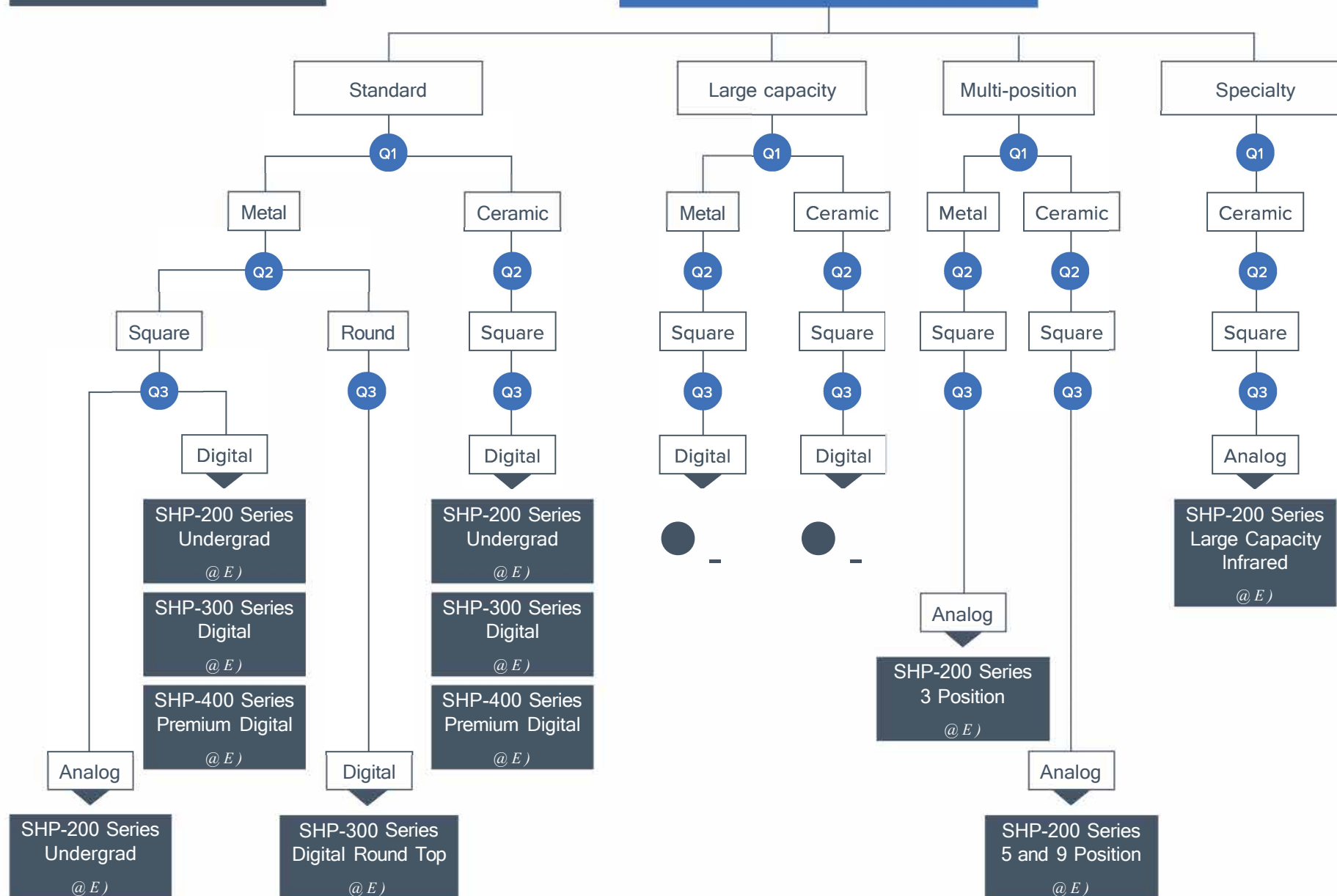




**Stirring only units**



What volume is combined and stirred?



# Product Range Overview

Premium Hot Plates and Stirrers  
HP-400, SHP-400



# Product Range Overview

## Premium Hot Plates and Stirrers

### HP-400, SHP-400

Cole-Parmer premium HP-400 series hot plates and SHP-400 series stirring hot plates have been designed to seamlessly blend scientific precision with contemporary styling to meet the day to day needs of today's scientific professionals and students. The mains independent "Hot" warning light will flash whenever the plate temperatures above 50 °C, even when the hot plate is turned off and unplugged from the mains. All models have an integral fixing point for a support rod. A simple, clean body allows for any spills to be easily deflected from the user. A spill-resistant front control module, with chemically toughened glass, means you can clearly see what is going on without fear of cosmetic damage to the unit. Available with ceramic or ceramic coated aluminum surfaces.

Premium hot plates and stirring hot plates feature a digital temperature setting, set and actual temperature are shown on the seven-segment digital display. Where accurate sample temperature control is required, the PT100 probe, included with the hot plate, can be used. As the hot plate heats samples to the set temperature, the advanced control algorithm automatically measures the rate of temperature rise to judge the capacity and nature of samples (e.g. oil or aqueous). It then optimizes the heating rate to minimize overshoot and time to set point. An audible alert sounds when the set temperature has been reached. There is the ability to create programs, controlling the temperature. Individual customer temperature profiles can be created and saved to the unit allowing for fast set up of complicated experimental procedures, without tying the user to the unit adjusting settings for a prolonged period of time. The unit is supplied with a PTFE coated temperature probe which, when immersed within the samples, allows accurate sample temperature control to within  $\pm 1^{\circ}\text{C}$ .

## Hot Plates and Stirrers

### HP-300, SHP-300

Digital stirring hot plates provide accurate stirring and temperature control. Ideal for day-to-day use by scientific professionals and students, the Cole-Parmer digital stirring hot plates offer precise temperature control and stirring speed of your samples. Powerful magnets provide consistent stirring speeds and the ability to mix large volumes up to 15 L. The simple body design allows spillages to be easily deflected from the user. Front control panel resists spills and the glass is chemically toughened for extra resilience. When plate temperature rises above 50 °C, a hot warning light flashes even if the unit is turned off or unplugged. All units feature an integral fixing point for a retort rod and are BioCote® antimicrobial protected.

The digital interface model features a digital temperature setting. The set and actual temperature is shown on the seven-segment digital display. Stirring speed is displayed by a 'hockey stick' LED array with the lights progressively illuminating to represent the speed range. To achieve accurate sample temperature control up to 392 °F (200 °C), a digital temperature controller (sold separately) can be connected to the rear of the unit.



## Undergrad Hot Plates and Stirrers ST-200, HP-200, SHP-200

The Cole-Parmer range of Undergrad hot plates includes dedicated hot plates, stirrer and combination stirring hot plate models which are available in a choice of coated metal or ceramic tops. The square design of the models allows flexibility of vessel size combinations. For safety, all units are designed to direct spills away from the user controls. For greater convenience and power saving, units are built with a standard mains switch (excluding stirring only models). All heating units are incorporated with the latest technology and microprocessor controlled dual thermocouples to ensure accurate temperature control and protection from overheating. Powerful magnets and motor allow remarkable stirring speeds (up to 2000 rpm) and mixing of large volumes of liquids (up to 15 L). Hot plates and stirring hot plates are available in glass ceramic or coated metal tops.



## Round Top Hot Plates and Stirrers ST-300, HP-300, SHP-300

Stylish and sleek digital models feature a unique control pad that allows all operations to be set using just your fingertip. An LCD shows both set and real-time parameters which are lockable to prevent accidental changes during use. Multiple stirring options allow a choice between one direction or reversing every 45 seconds for thorough mixing. Built-in timer can be set for up to 9 hours or continuous operation. Optimal heating is produced by an integrated temperature sensor and dual PID control that rapidly heats the plate and maintains desired temperature. Dual temperature control circuit also ensures temperature stability in case one circuit malfunctions. Safety features include user-set safety temperature limit through main control panel, hot warning light indicator, and digital error code functions for easy troubleshooting.





## Multi-Position Stirrers and Stirring Hot Plates ST-200 and SHP-200

These multi-position stirrers and stirring hot plates offer more versatility than single-position units. Available with five or nine stirring positions with each position being individually controlled so you can perform different mixing applications simultaneously.

Use stirring hot plates to heat only, stir only, or heat and stir simultaneously. "Hot" warning light for each plate will flash whenever the temperature is above 50 °C and will stay on even when the hot plate is turned off and connected to the mains.

Ceramic top plates offer excellent chemical resistance with thermal properties that allow very high plate temperatures, while ensuring the edges stay cooler. The top plates are a robust aluminum/silicon alloy, providing even plate temperature. Powerful magnets and motor give stirring speed up to 1500 rpm and volumes up to 15 L.



## Large Capacity Hot Plates and Stirrers HP-200, ST-200, SHP-200

These general purpose units are designed with safety as well as performance in mind. The compact shape takes up little bench space and makes storage easier. Large capacity hot plates and stirrers provide accurate temperature and speed control.

Stirring units include powerful magnets providing strong stirring action. Heating units are microprocessor controlled for accurate plate temperature monitoring. "Hot" warning light will flash when the top plate is hot, and safety circuit prevents against overheating.

The housing is designed to deflect spills away from the user. Units feature either aluminum top plate for rapid heating and better temperature uniformity or chemically resistant ceramic that stays cool around the edges to help prevent burns. Units accommodate multiple vessels, one large container, or even microscope slides.



# Available Accessories

## Probe Holder

Clamps on to the support rod to allow secure positioning of the temperature probe in the sample.

## Support Rod

Securely screws into the rear of all models of hot plates and stirring hot plates. Available in 12-inch or 24-inch lengths.

## PTFE Probe

Chemically-resistant probe for accurate monitoring of hazardous or corrosive samples.





## Ordering Information - Heating Only Units

Heating Only, Standard								
Description	Top plate material	Plate shape	Control	Plate dimensions	Max temperature	Watts	Voltage	Item Number
HP-200 Series Undergrad Analog Hot Plate	Ceramic	Square	Analog	15 x 15 cm (6 x 6 in)	450 oc (842 Of)	500	120VAC	<a href="#">04807-51</a>
HP-200 Series Undergrad Analog Hot Plate	Ceramic	Square	Analog	15 x 15 cm (6 x 6 in)	450 oc (842 Of)	500	230VAC	<a href="#">04807-50</a>
HP-200 Series Undergrad Analog Hot Plate	Coated Aluminum	Square	Analog	15 x 15 cm (6 x 6 in)	325 oc (617 Of)	700	120VAC	<a href="#">04807-53</a>
HP-200 Series Undergrad Analog Hot Plate	Coated Aluminum	Square	Analog	15 x 15 cm (6 x 6 in)	325 oc (617 Of)	700	230VAC	<a href="#">04807-52</a>
HP-300 Series Digital Hot Plates, Blue, 500 W, 120 VAC	Ceramic	Square	Digital	15 x 15 cm (6 x 6 in)	450 oc (842 Of)	500	120VAC	<a href="#">04806-30</a>
HP-300 Series Digital Hot Plates, Blue, 500 W, 230 VAC	Ceramic	Square	Digital	15 x 15 cm (6 x 6 in)	450 oc (842 Of)	500	230VAC	<a href="#">04806-31</a>
HP-300 Series Digital Hot Plates, White, 500 W, 120 VAC	Ceramic	Square	Digital	15 x 15 cm (6 x 6 in)	450 oc (842 Of)	500	120VAC	<a href="#">04806-32</a>
HP-300 Series Digital Hot Plates, White, 500 W, 230 VAC	Ceramic	Square	Digital	15 x 15 cm (6 x 6 in)	450 oc (842 Of)	500	230VAC	<a href="#">04806-33</a>
HP-300 Series Digital Hot Plates, Blue, 700 W, 120 VAC	Aluminum	Square	Digital	15 x 15 cm (6 x 6 in)	325 oc (617 Of)	700	120VAC	<a href="#">04806-24</a>
HP-300 Series Digital Hot Plates, Blue, 700 W, 230 VAC	Aluminum	Square	Digital	15 x 15 cm (6 x 6 in)	325 oc (617 Of)	700	230VAC	<a href="#">04806-25</a>
HP-300 Series Digital Hot Plates, White, 700 W, 120 VAC	Aluminum	Square	Digital	15 x 15 cm (6 x 6 in)	325 oc (617 °f)	700	120VAC	<a href="#">04806-26</a>
HP-300 Series Digital Hot Plates, White, 700 W, 230 VAC	Aluminum	Square	Digital	15 x 15 cm (6 x 6 in)	325 oc (617 Of)	700	230VAC	<a href="#">04806-27</a>
HP-400 Series Premium Digital Hot Plates, Blue, 700 W, 120 VAC	Aluminum	Square	Digital	15 x 15 cm (6 x 6 in)	325 oc (617 °f)	700	120VAC	<a href="#">04806-48</a>
HP-400 Series Premium Digital Hot Plates, Blue, 700 W, 230 VAC	Aluminum	Square	Digital	15 x 15 cm (6 x 6 in)	325 oc (617 Of)	700	230VAC	<a href="#">04806-49</a>
HP-400 Series Premium Digital Hot Plates, White, 700 W, 120 VAC	Aluminum	Square	Digital	15 x 15 cm (6 x 6 in)	325 oc (617 °f)	700	120VAC	<a href="#">04806-50</a>
HP-400 Series Premium Digital Hot Plates, White, 700 W, 230 VAC	Aluminum	Square	Digital	15 x 15 cm (6 x 6 in)	325 oc (617 Of)	700	230VAC	<a href="#">04806-51</a>
HP-300 Series Digital Round-Top Hot Plates, 600 W, 120 VAC	Ceramic Coated Aluminum	Round	Digital	13.5 cm (5.3 in) dia	340 oc (644 Of)	600	120VAC	<a href="#">04661-23</a>
HP-300 Series Digital Round-Top Hot Plates, 600 W, 230 VAC	Ceramic Coated Aluminum	Round	Digital	13.5 cm (5.3 in) dia	340 oc (644 °f)	600	230VAC	<a href="#">04661-24</a>
HP-200 Series Hot Plate with PTFE Platform, 900 W, 230 VAC	Glass Ceramic	Square	Analog	30 x 30 cm (12 x 12 in)	400 oc (752 Of)	900	230VAC	<a href="#">04801-08</a>

Heating Only, Large Capacity								
Description	Top plate material	Plate shape	Control	Plate dimensions	Temperature range	Watts	Voltage	Item Number
HP-200 Series Large-Capacity Digital Hot Plates, 1200 W, 120 VAC	Glass Ceramic	Square	Digital	30 x 30 cm (12 x 12 in)	50-450 oc (122-842 Of)	1200	120VAC	<a href="#">04807-67</a>
HP-200 Series Large-Capacity Digital Hot Plates, 1200 W, 230 VAC	Glass Ceramic	Square	Digital	30 x 30 cm (12 x 12 in)	50-450 oc (122-842 Of)	1200	230VAC	<a href="#">04807-66</a>
HP-200 Series Large-Capacity Digital Hot Plates, 2250 W, 230 VAC	Glass Ceramic	Rectangle	Digital	30 x 50 cm (12 x 20 in)	50-375 oc (122-707 °f)	2250	230VAC	<a href="#">04807-70</a>
HP-200 Series Large-Capacity Digital Hot Plates, 600 W, 120 VAC	Al/Si Metal Alloy	Square	Digital	30 x 30 cm (12 x 12 in)	50-300 oc (122-572 Of)	600	120VAC	<a href="#">04807-81</a>
HP-200 Series Large-Capacity Digital Hot Plates, 600 W, 120 VAC	Al/Si Metal Alloy	Square	Digital	30 x 30 cm (12 x 12 in)	50-300 oc (122-572 °f)	600	230VAC	<a href="#">04807-80</a>
HP-200 Series Large-Capacity Digital Hot Plates, 1500 W, 120 VAC	Al/Si Metal Alloy	Rectangle	Digital	30 x 50 cm (12 x 20 in)	50-300 oc (122-572 Of)	1500	120VAC	<a href="#">04807-83</a>
HP-200 Series Large-Capacity Digital Hot Plates, 1500 W, 120 VAC	Al/Si Metal Alloy	Rectangle	Digital	30 x 50 cm (12 x 20 in)	50-300 oc (122-572 Of)	1500	230VAC	<a href="#">04807-82</a>

Heating Only, Specialty								
Description	Top plate material	Plate shape	Control	Plate Dimensions	Max temperature	Watts	Voltage	Item Number
HP-200 Series Large-Capacity Infrared Hot Plates, 120 VAC	Glass Ceramic	Square	Analog	30 x 30 cm (12 x 12 in)	450 °C (842 °F)	900	120 VAC	<a href="#">04807-85</a>
HP-200 Series Large-Capacity Infrared Hot Plates, 230 VAC	Glass Ceramic	Square	Analog	30 x 30 cm (12 x 12 in)	450 °C (842 °F)	900	230 VAC	<a href="#">04807-84</a>

## Ordering Information - Stirring Only Units

Stirring Only, Standard									
Description	Top plate material	Plate shape	Control	Plate dimensions	Speed range	Max Capacity (Liters)	Watts	Voltage	Item Number
ST-200 Series Undergrad Analog Stirrers, Ceramic, 120 VAC	Glass Ceramic	Square	Analog	15 x 15 cm (6 x 6 in)	100-2000 rpm	15	50	120VAC	<a href="#">04807-55</a>
ST-200 Series Undergrad Analog Stirrers, Ceramic, 230 VAC	Glass Ceramic	Square	Analog	15 x 15 cm (6 x 6 in)	100-2000 rpm	15	50	230VAC	<a href="#">04807-54</a>
ST-200 Series Undergrad Analog Stirrers, Stainless Steel, 120 VAC	Stainless Steel	Square	Analog	15 x 15 cm (6 x 6 in)	100-2000 rpm	15	50	120 VAC	<a href="#">04807-57</a>
ST-200 Series Undergrad Analog Stirrers, Stainless Steel, 230 VAC	Stainless Steel	Square	Analog	15 x 15 cm (6 x 6 in)	100-2000 rpm	15	50	230VAC	<a href="#">04807-56</a>
ST-300 Series Digital Round-Top Stirrers, 120 VAC	Ceramic Coated Aluminum	Round	Digital	13.5 cm (5.3 in) dia	100-1800 rpm	20	-	120 VAC	<a href="#">04661-29</a>
ST-300 Series Digital Round-Top Stirrers, 230 VAC	Ceramic Coated Aluminum	Round	Digital	13.5 cm (5.3 in) dia	100-1800 rpm	20	-	230 VAC	<a href="#">04661-30</a>

Stirring Only, Large Capacity								
Description	Top plate material	Plate shape	Control	Plate dimensions	Speed range	Max Capacity (Liters)	Voltage	Item Number
ST-200 Series Large-Capacity Stirrers, 120 VAC	Stainless Steel	Square	Analog	30 x 30 cm (12 x 12 in)	100-600 rpm	30	120 VAC	<a href="#">04807-75</a>
ST-200 Series Large-Capacity Stirrers, 230 VAC	Stainless Steel	Square	Analog	30 x 30 cm (12 x 12 in)	100-600 rpm	30	230 VAC	<a href="#">04807-74</a>

Stirring Only, Multi-Position									
Description	Top plate material	Plate shape	Control	Plate dimensions	Speed range	Number of Stirring Positions	Max Capacity	Voltage	Item Number
ST-200 Series Multiposition Stirrers, 5 position, 120 VAC	Ceramic	Square	Analog	30 x 30 cm (12 x 12 in)	100-1500 rpm	5	18 kg (40 lb)	120VAC	<a href="#">51450-21</a>
ST-200 Series Multiposition Stirrers, 5 position, 230 VAC	Ceramic	Square	Analog	30 x 30 cm (12 x 12 in)	100-1500 rpm	5	18 kg (40 lb)	230VAC	<a href="#">51450-26</a>
ST-200 Series Multiposition Stirrers, 9 position, 120 VAC	Ceramic	Square	Analog	30 x 30 cm (12 x 12 in)	100-1500 rpm	5	18 kg (40 lb)	120VAC	<a href="#">51450-23</a>
ST-200 Series Multiposition Stirrers, 9 position, 230 VAC	Ceramic	Square	Analog	30 x 30 cm (12 x 12 in)	100-1500 rpm	5	18 kg (40 lb)	230VAC	<a href="#">51450-28</a>
ST-200 Series 3-Position Stirrer, 230 VAC	Stainless Steel	Rectangle	Analog	55 x 21 cm (21.5 x 8.25 in)	0-1500 rpm	3	2 kg (4.4 lb)	230VAC	<a href="#">51400-02</a>

## Ordering Information - Stirring Only Units

Stirring Only, Specialty									
Description	Top plate material	Plate shape	Control	Speed range	Number of stirring position	Max Capacity (Liters)	Nomical power consumption	Voltage	Item Number
BS-200 Series Stirrers for Cell Culture Stirring Systems, 1 liter capacity	Stainless Steel	Square	Analog	0-80 rpm	2	1	2 W	120/230 VAC	<a href="#">21837-01</a>
BS-200 Series Stirrers for Cell Culture Stirring Systems, 0.5 liter capacity	Stainless Steel	Square	Analog	0-80 rpm	4	0.5	2 W	120/230 VAC	<a href="#">21837-03</a>
BS-200 Series Stirrers for Cell Culture Stirring Systems, 1 liter capacity	Stainless Steel	Square	Analog	0-80 rpm	4	1	2 W	120/230 VAC	<a href="#">21837-02</a>
BS-200 Series Stirrers for Cell Culture Stirring Systems, 5 liter capacity	Stainless Steel	Square	Analog	0-80 rpm	4	5	2 W	120/230 VAC	<a href="#">21837-04</a>
Battery-Powered Magnetic Stirrer	Metal	Square	Analog	200-700 rpm	1	2.5	-	Battery	<a href="#">04804-01</a>
ST-100 Series Mini Stirrer, 120/230 VAC	Polypropylene/ Polycarbonate	Square	Analog	350-2000 rpm	1	1	-	120/230 VAC	<a href="#">04801-19</a>
ST-200 Series Portable Analog Stirrer, Battery Operated	ABS Plastic	Square	Analog	0-1300 rpm	1	1.5	-	Battery	<a href="#">04801-05</a>
Modular Multi-Position Stirrer Kit	Glass	Square	Digital	100-1500 rpm	4	1	-	120/230 VAC	<a href="#">84003-80</a>
Modular Stirrer Control Unit	Glass	Square	Digital	100-1500 rpm	4	1	-	120/230 VAC	<a href="#">84003-81</a>
Modular Magnetic Stirring Unit	Glass	Square	Digital	100-1500 rpm	4	1	-	120/230 VAC	<a href="#">84003-82</a>
ST-200 Series Ultra-Thin Magnetic Stirrer, 120/230 VAC	Polyester	Round	Digital	20-1500 rpm	1	1	3 W	120/230 VAC	<a href="#">84003-71</a>

## Ordering Information - Combination Heating and Stirring Units

Combination Heating and Stirring, Standard									
Description	Top plate material	Plate shape	Control	Plate dimensions	Max temperature	Speed range	Watts	Voltage	Item Number
SHP-200 Series Undergrad Analog Stirring Hot Plates, Ceramic, 120VAC	Glass Ceramic	Square	Analog	15 x 15 cm (6 x 6 in)	450 °C (842 °F)	100-2000 rpm	550	120 VAC	<a href="#">04807-59</a>
SHP-200 Series Undergrad Analog Stirring Hot Plates, Ceramic, 230VAC	Glass Ceramic	Square	Analog	15 x 15 cm (6 x 6 in)	450 °C (842 °F)	100-2000 rpm	550	230 VAC	<a href="#">04807-58</a>
SHP-200 Series Undergrad Analog Stirring Hot Plates, Aluminum, 120VAC	Coated Aluminum	Square	Analog	15 x 15 cm (6 x 6 in)	325 °C (617 °F)	100-2000 rpm	750	120 VAC	<a href="#">04807-61</a>
SHP-200 Series Undergrad Analog Stirring Hot Plates, Aluminum, 230VAC	Coated Aluminum	Square	Analog	15 x 15 cm (6 x 6 in)	325 °C (617 °F)	100-2000 rpm	750	230VAC	<a href="#">04807-60</a>
SHP-300 Series Digital Stirring Hot Plate, Ceramic, Blue 120 VAC	Ceramic	Square	Digital	15 x 15 cm (6 x 6 in)	450 °C (842 °F)	50-1250 rpm	500	120VAC	<a href="#">04806-42</a>
SHP-300 Series Digital Stirring Hot Plate, Ceramic, Blue 230 VAC	Ceramic	Square	Digital	15 x 15 cm (6 x 6 in)	450 °C (842 °F)	50-1250 rpm	500	230VAC	<a href="#">04806-43</a>
SHP-300 Series Digital Stirring Hot Plate, Ceramic, White, 120 VAC	Ceramic	Square	Digital	15 x 15 cm (6 x 6 in)	450 °C (842 °F)	50-1250 rpm	500	120VAC	<a href="#">04806-44</a>
SHP-300 Series Digital Stirring Hot Plate, Ceramic, White, 230 VAC	Ceramic	Square	Digital	15 x 15 cm (6 x 6 in)	450 °C (842 °F)	50-1250 rpm	500	230VAC	<a href="#">04806-45</a>
SHP-300 Series Digital Stirring Hot Plate, Aluminum, Blue, 120 VAC	Aluminum	Square	Digital	15 x 15 cm (6 x 6 in)	325 °C (617 °F)	50-1400 rpm	700	120VAC	<a href="#">04806-36</a>
SHP-300 Series Digital Stirring Hot Plate, Aluminum, Blue, 230 VAC	Aluminum	Square	Digital	15 x 15 cm (6 x 6 in)	325 °C (617 °F)	50-1400 rpm	700	230VAC	<a href="#">04806-37</a>
SHP-300 Series Digital Stirring Hot Plate, Aluminum, White, 120 VAC	Aluminum	Square	Digital	15 x 15 cm (6 x 6 in)	325 °C (617 °F)	50-1400 rpm	700	120 VAC	<a href="#">04806-38</a>
SHP-300 Series Digital Stirring Hot Plate, Aluminum, White, 230 VAC	Aluminum	Square	Digital	15 x 15 cm (6 x 6 in)	325 °C (617 °F)	50-1400 rpm	700	230 VAC	<a href="#">04806-39</a>
SHP-400 Series Premium Digital Stirring Hot Plates, Ceramic, Blue, 120VAC	Ceramic	Square	Digital	15 x 15 cm (6 x 6 in)	450 °C (842 °F)	50-2000 rpm	500	120 VAC	<a href="#">04806-80</a>
SHP-400 Series Premium Digital Stirring Hot Plates, Ceramic, Blue, 230VAC	Ceramic	Square	Digital	15 x 15 cm (6 x 6 in)	450 °C (842 °F)	50-2000 rpm	500	230 VAC	<a href="#">04806-81</a>
SHP-400 Series Premium Digital Stirring Hot Plates, Ceramic, White, 120 VAC	Ceramic	Square	Digital	15 x 15 cm (6 x 6 in)	450 °C (842 °F)	50-2000 rpm	500	120 VAC	<a href="#">04806-82</a>
SHP-400 Series Premium Digital Stirring Hot Plates, Ceramic, White, 230 VAC	Ceramic	Square	Digital	15 x 15 cm (6 x 6 in)	450 °C (842 °F)	50-2000 rpm	500	230 VAC	<a href="#">04806-83</a>
SHP-400 Series Premium Digital Stirring Hot Plates, Aluminum, Blue, 120 VAC	Aluminum	Square	Digital	15 x 15 cm (6 x 6 in)	325 °C (617 °F)	50-2000 rpm	700	120 VAC	<a href="#">04806-64</a>
SHP-400 Series Premium Digital Stirring Hot Plates, Aluminum, Blue, 230 VAC	Aluminum	Square	Digital	15 x 15 cm (6 x 6 in)	325 °C (617 °F)	50-2000 rpm	700	230 VAC	<a href="#">04806-65</a>
SHP-400 Series Premium Digital Stirring Hot Plates, Aluminum, White, 120 VAC	Aluminum	Square	Digital	15 x 15 cm (6 x 6 in)	325 °C (617 °F)	50-2000 rpm	700	120 VAC	<a href="#">04806-66</a>
SHP-400 Series Premium Digital Stirring Hot Plates, Aluminum, White, 230 VAC	Aluminum	Square	Digital	15 x 15 cm (6 x 6 in)	325 °C (617 °F)	50-2000 rpm	700	230 VAC	<a href="#">04806-67</a>

## Ordering Information - Combination Heating and Stirring Units

Combination Heating and Stirring, Standard (continued)									
Description	Top plate material	Plate shape	Control	Plate dimensions	Max temperature	Speed range	Watts	Voltage	Item Number
SHP-200 Series Undergrad Digital Stirring Hot Plates, Ceramic, 120VAC	Glass Ceramic	Square	Digital	15 x 15 cm (6 x 6 in)	450 °C (842 °F)	100-2000 rpm	550	120 VAC	<a href="#">04807-63</a>
SHP-200 Series Undergrad Digital Stirring Hot Plates, Ceramic, 230VAC	Glass Ceramic	Square	Digital	15 x 15 cm (6 x 6 in)	450 °C (842 °F)	100-2000 rpm	550	230 VAC	<a href="#">04807-62</a>
SHP-200 Series Undergrad Digital Stirring Hot Plates, Aluminum, 120VAC	Coated Aluminum	Square	Digital	15 x 15 cm (6 x 6 in)	325 °C (617 °F)	100-2000 rpm	750	120 VAC	<a href="#">04807-65</a>
SHP-200 Series Undergrad Digital Stirring Hot Plates, Aluminum, 230VAC	Coated Aluminum	Square	Digital	15 x 15 cm (6 x 6 in)	325 °C (617 °F)	100-2000 rpm	750	230 VAC	<a href="#">04807-64</a>
SHP-300 Series Digital Round-Top Stirring Hot Plates, 120 VAC	Ceramic Coated Aluminum	Round	Digital	13.5 cm (5.3 in) dia	340 °C (644 °F)	100-1800 rpm	600	120 VAC	<a href="#">04661-45</a>
SHP-300 Series Digital Round-Top Stirring Hot Plates, 230 VAC	Ceramic Coated Aluminum	Round	Digital	13.5 cm (5.3 in) dia	340 °C (644 °F)	100-1800 rpm	600	230 VAC	<a href="#">04661-46</a>

Combination Heating and Stirring, Large Capacity									
Description	Top plate material	Plate shape	Control	Plate dimensions	Max temperature	Speed range	Watts	Voltage	Item Number
SHP-200 Series Large-Capacity Digital Stirring Hot Plates, Ceramic, 120VAC	Glass Ceramic	Square	Digital	30 x 30 cm (12 x 12 in)	450 °C (842 °F)	100-1500 rpm	1200	120 VAC	<a href="#">04807-77</a>
SHP-200 Series Large-Capacity Digital Stirring Hot Plates, Ceramic, 230VAC	Glass Ceramic	Square	Digital	30 x 30 cm (12 x 12 in)	450 °C (842 °F)	100-1500 rpm	1200	230 VAC	<a href="#">04807-76</a>
SHP-200 Series Large-Capacity Digital Stirring Hot Plates, Metal, 120VAC	Al/Si Metal Alloy	Square	Digital	30 x 30 cm (12 x 12 in)	300 °C (572 °F)	100-1500 rpm	600	120 VAC	<a href="#">04807-79</a>
SHP-200 Series Large-Capacity Digital Stirring Hot Plates, Metal, 230VAC	Al/Si Metal Alloy	Square	Digital	30 x 30 cm (12 x 12 in)	300 °C (572 °F)	100-1500 rpm	600	230 VAC	<a href="#">04807-78</a>

## Ordering Information - Combination Heating and Stirring Units

Combination Heating and Stirring, Multi-Position										
Description	Top plate material	Plate shape	Control	Plate dimensions	Temperature range	Speed range	Number of Stirring Positions	Max Capacity	Voltage	Item Number
ST-200 Series Multiposition Stirring Hot Plates, 5 position, 120 VAC	Ceramic	Square	Analog	30 x 30 cm (12 x 12 in)	100-450 °C (212-845 °F)	100-1500 rpm	5	18 kg (40 lb)	120VAC	<a href="#">51450-71</a>
ST-200 Series Multiposition Stirring Hot Plates, 5 position, 230 VAC	Ceramic	Square	Analog	30 x 30 cm (12 x 12 in)	100-450 °C (212-845 °F)	100-1500 rpm	5	18 kg (40 lb)	230VAC	<a href="#">51450-76</a>
ST-200 Series Multiposition Stirring Hot Plates, 9 position, 120 VAC	Ceramic	Square	Analog	30 x 30 cm (12 x 12 in)	100-450 °C (212-845 °F)	100-1500 rpm	9	18 kg (40 lb)	120VAC	<a href="#">51450-73</a>
ST-200 Series Multiposition Stirring Hot Plates, 9 position, 230 VAC	Ceramic	Square	Analog	30 x 30 cm (12 x 12 in)	100-450 °C (212-845 °F)	100-1500 rpm	9	18 kg (40 lb)	230VAC	<a href="#">51450-78</a>
ST-200 Series 3-Position Stirring Hot Plate, 230VAC	Al/Si Metal Alloy	Square	Analog	16 x 16 cm (6.25 x 6.25 in)	50-325 °C (122-617 °F)	100-1500 rpm	3	2 kg (4.4 lb)	230VAC	<a href="#">51600-08</a>

Combination Heating and Stirring, Specialty										
Description	Top plate material	Plate shape	Control	Plate dimensions	Temperature range	Speed range	Number of Stirring Positions	Max Capacity (Liters)	Voltage	Item Number
SHP-200 Series Large-Capacity Infrared Stirring Hot Plates, 120 VAC	Glass Ceramic	Square	Analog	30 x 30 cm (12 x 12 in)	450 °C (842 °F)	100-1500 rpm	1	15	120VAC	<a href="#">04807-87</a>
SHP-200 Series Large-Capacity Infrared Stirring Hot Plates, 230 VAC	Glass Ceramic	Square	Analog	30 x 30 cm (12 x 12 in)	450 °C (842 °F)	100-1500 rpm	1	15	230VAC	<a href="#">04807-86</a>

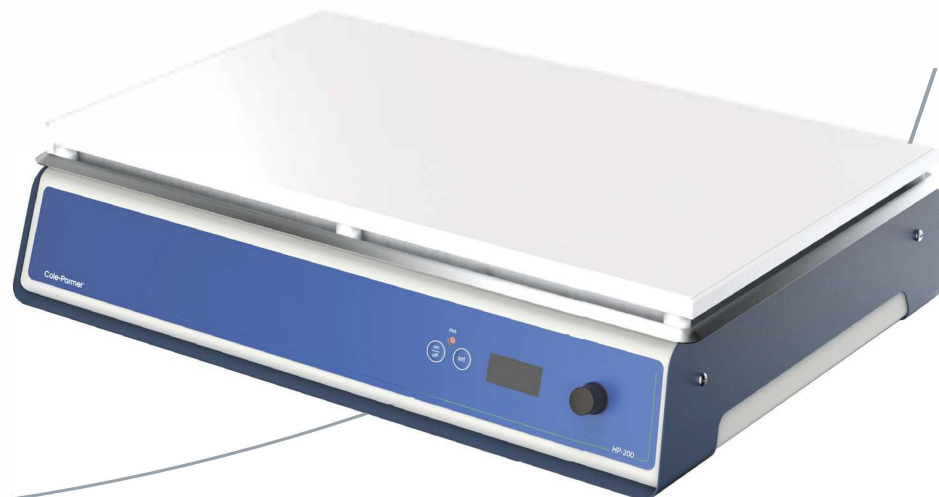


## HP-200, SHP-200 Series Large Capacity Hot Plates and Stirrers

- 30 x 30 *cm* (12 x 12 ins), and 30 x 50 *cm* (12 x 20 ins)
- Digital and Infrared
- Choice of plate material
- All units incorporate the latest technology, microprocessor controlled, dual thermocouples to ensure accurate temperature control and over temperature protection
- Biocote® anti-microbial protection
- LED temperature indicator
- The hot warning light remains active even when switched off, but still connected to the mains supply.
- Now includes a 120 VAC variant across the range
- 3-year warranty



Hotplate Stirrer SHP-200D-L-C



Hotplate Stirrer HP-200D-XL-C

# HP-200 Series Large Capacity Hot Plates - Digital

## Features:

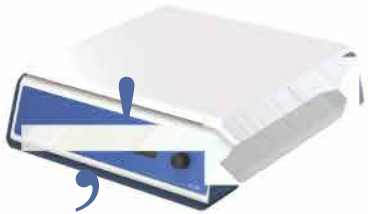
- Digital setting and control of plate temperature
- Accurate temperature control by microprocessor
- Choice of top plate material
  - glass ceramic - provides excellent chemical resistance, high plate temperatures, easy to clean
  - aluminum/silicon alloy - rapid heating and even temperature distribution across whole plate
- Large square plate area ideal for heating one large vessel or several smaller ones
  - 30 x 50 cm can accommodate up to 30 x 100 ml beakers
- The hot warning light remains active even when switched off, but still connected to the mains supply.
- 30 x 30 cm (12 x 12 ins)
  - 04807-66-67 - ceramic, max temp 450 °C
  - 04804-80-81 - aluminum, max temp 300 °C
- 30 x 50 cm (12 x 20 ins)
  - 04807-70 - ceramic, max temp 375 °C
  - 04807-82-83 - aluminum, max temp 300 °C



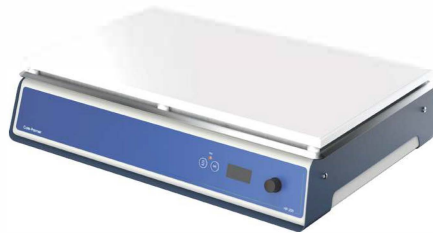
HP-200D-L-S  
230V: 04807-80  
120V: 04807-81



HP-200D-XL-S  
230V: 04807-82  
120V: 04807-83



HP-200D-L-C  
230V: 04807-66  
120V: 04807-67



HP-200D-XL-C  
230V: 04807-70





HP-200-IR-L  
230V: 04807-84  
120V: 04807-85

## HP-200 Series Large Capacity Hot Plates - Infrared

### Features:

- Easy to use temperature control dial
- Infrared heater is efficient and saves time and energy
  - even plate temperatures and uniform heating conditions
- Ideal for heating large volumes of liquid
- Chemically resistant ceramic top
  - Max temp 450 °C
- The hot warning light remains active even when switched off, but still connected to the mains supply.
- 30 x 30 cm (12 x 12 ins)



ST-200-L-S  
230V: 04807-74  
120V: 04807-75

## ST-200 Series Large Capacity Stirrers

### Features:

- Easy to use temperature control dial
- Powerful magnetic drive with electronic feed-back speed control accurately maintains the set speed
- Powerful magnets for strong magnetic coupling
- Speed range -100-600 rpm
- Easily stirs up to 30 liters
- Robust, durable construction with stainless steel top
- 30 x 30 cm (12 x 12 ins)

## SHP-200 Large Capacity Stirrer/Hot Plates - Digital



SHP-200D-L-C  
230V: 04807-76  
120V: 04807-77



SHP-200D-L-S  
230V: 04807-78  
120V: 04807-79

### Features:

- Easy to use temperature and stirring control dials
- Choice of top plate material
  - glass ceramic - provides excellent chemical resistance, high plate temperatures, easy to clean
  - aluminum/silicon alloy - rapid heating and even temperature distribution across whole plate
- Large square plate area ideal for handling large vessel
- Powerful stirring action - volumes up to 15 Liters
- Independent safety circuit to protect against overheating
- The hot warning light remains active even when switched *off*, but still connected to the mains supply.
- 30 x 30 cm (12 x 12 ins)
  - 04807-76-77 - ceramic, max temp 450 °C, stirring 100 -1500 rpm
  - 04807-78-79 - aluminum, max temp 300 °C, stirring 100 -1500 rpm



SHP-200-IR-L  
230V: 04807-86  
120V: 04807-87

## SHP-200 Series Large Capacity Stirrer/Hot Plates - Infrared

### Features:

- Easy to use temperature control dial
- Powerful magnetic drive with electronic feed-back speed control accurately maintains the set speed
- Powerful magnets for strong magnetic coupling - stirring 100 - 1500 rpm
- Easily stirs up to 30 liters
- Chemically resistant ceramic top - max temp 450 °C
- 30 x 30 cm (12 x 12 ins)

## Specifications

Model no.	HP-200D-L-C	HP-200D-L-S	HP-200D-XL-C	HP-200D-XL-S	ST-200-L-S	SHP-200D-L-C	SHP-200D-L-S	HP-200-IR-L	SHP-200-IR-L
Plate material	Glass ceramic	Al/Si alloy	Glass ceramic	Al/Si alloy	Stainless steel	Glass ceramic	Al / Si alloy	-	-
Plate dimensions	30x30 cm	30x30cm	30 x 50 cm	30x50 cm	30x30cm	30 x 30 cm	30 x 30 cm	30x30cm	30x30 cm
Heated area, mm	20 x 2 cm	30x30cm	25 x 45 cm	30x50 cm	-	20x20 cm	30 x 30 cm	14 cm diameter	14 cm diameter
Heater power	1200W	600W	2250W	1500W	-	1200W	600W	900W	900W
Max. plate temp	450 °C	300 °C	375 °C	300 °C	-	450 °C	300 °C	-	-
Speed range	-	-	-	-	100x600 rpm	100 to 1500 rpm	100 to 1500 rpm	-	100 to 1500 rpm
Max.stirring capacity	-	-	-	-	30 L	15 L	15 L	-	-
Dimensions [W x H x D]	32 x 12 x 37 cm	32 x 12 x 37 cm	56x13x36cm	56 x13 x 36 cm	32.8 x 10.3 x 36.9 cm	30 x 10.5 x 36.5 cm	30 x 10.5 x 36.5 cm	30 x 10.5 x 36.5 cm	30 x 10.5 x 36.5 cm
Net weight, kg	6	6	12	12	5	7	7	4	4
Electricity supply	120 VAC, 60 Hz 230 VAC 50/60 Hz	120 VAC, 60 Hz 230 VAC 50/60 Hz	230 VAC, 50 Hz	120 VAC, 60 Hz 230 VAC 50/60 Hz	120 VAC, 60 Hz 230 VAC 50/60 Hz	120 VAC, 60 Hz 230 VAC 50/60 Hz	120 VAC, 60 Hz 230 VAC 50/60 Hz	120 VAC, 60 Hz 230 VAC 50/60 Hz	120 VAC, 60 Hz 230 VAC 50/60 Hz
P rating	IP31	IP31	IP20	IP20	IP20	IP20	IP20	IP20	IP20
Warranty	3 years	3 years	3 years	3 years	3 years	3 years	3 years	3 years	3 years

## Ordering Information

Description	Item no.	Series no.	Model no.	LegacySKU
Ceramic, Digital, 30x30 cm Hotplate, 230 VAC	04807-66	HP-200	HP-200D-L-C	CB300
Ceramic, Digital, 30x30 cm Hotplate, 120 VAC	04807-67	HP-200	HP-200D-L-C-120	CB300/120V/60
Ceramic, Digital, 30x50 cm Hotplate, 230 VAC	04807-70	HP-200	HP-200D-XL-C	CB500
Metal, Analog, 30x30 cm Stirrer, 230VAC	04807-74	ST-200	ST-200-L-S	S8301
Metal, Analog, 30x30 cm Stirrer, 120VAC	04807-75	ST-200	ST-200-L-S-120	S8301/120V/60
Ceramic, Digital, 30x30 cm Hotplate/Stirrer, 230 VAC	04807-76	SHP-200	SHP-200D-L-C	CB302
Ceramic, Digital, 30x30 cm Hotplate/Stirrer, 120 VAC	04807-77	SHP-200	SHP-200D-L-C-120	CB302/120V/60
Metal, Digital, 30x30 cm Hotplate/Stirrer, 230 VAC	04807-78	1 SHP-200	1 SHP-200D-L-S	1 S8302
Metal, Digital, 30x30 cm Hotplate/Stirrer, 120 VAC	04807-79	1 SHP-200	1 SHP-200D-L-S-120	1 S8302/120V/60
Metal, Digital, 30x30 cm Hotplate, 230VAC	04807-80	1 HP-200D	1 HP-200D-L-S	1 SD300

## Ordering Information - continued

Description	Item no.	Series no.	Model no.	Legacy SKU
Metal, Digital, 30x30 cm Hotplate, 120VAC	04807-81	1 HP-200D	1 HP-200D-L-S-120	1 SD300/120V/60
Metal, Digital, 30x50 cm Hotplate, 230VAC	04807-82	1 HP-200D	1 HP-200D-XL-S	1 SD500
Metal, Digital, 30x50 cm Hotplate, 120VAC	04807-83	1 HP-200D	1 HP-200D-XL-S-120	1 SD500/120V/6
Infrared Hotplate, 30x30 cm, 230VAC	04807-84	1 HP-200	1 HP-200-IR-L	1 CR300
Infrared Hotplate, 30x30 cm, 120VAC	04807-85	1 HP-200	1 HP-200-IR-L-120	1 CR300/120V/60
Infrared Hotplate/Stirrer, 30x30 cm, 230 VAC	04807-86	1 SHP-200	1 SHP-200-IR-L	1 CR302
Infrared Hotplate/Stirrer, 30x30 cm, 120 VAC	04807-87	1 SHP-200	1 SHP-200-IR-L-120	1 CR302/120V/60

# Cole-Parmer®

## Cole-Parmer® Premium Hot Plate Stirrer SHP-400

- Hot surface warning light flashes when plate temperature is above 50 °C
- Durable front panel resists spills and chemicals
- Available in various colors





## Cole-Parmer® Premium Hot Plate Stirrer SHP-400

The Cole-Parmer® SHP-400 Premium Hot Plates have been designed to seamlessly blend scientific precision with contemporary styling and meet the day to day needs of today's scientific professionals and students. The mains independent "Hot" warning light will flash whenever the plate temperature is above 50°C even when the hotplate is turned off and unplugged from the mains. This unit features an integral fixing point for a retort rod. Ceramic coated Aluminium surfaces have been designed for very accurate top plate temperature. Ideal for microarrays, in-situ hybridisation and specialised electronics applications. The top plate has a thin ceramic coating for added chemical resistance. A 700W element gives rapid heating and ensures even temperature distribution across the whole surface of the plate.

### Technical Specification

Specification	SHP-400
Plate material	Ceramic or Ceramic-Coated Aluminium
Plate dimensions, mm	150 x 150
Heated area, mm (Ceramic)	120 x 120
Heated area, mm (Ceramic-Coated Aluminium)	150 x 150
Heater power, W	Ceramic 500W, Ceramic Coated Alum 700W
Stirrer Speed, RPM (Ceramic)	50 up to 1250
Stirrer Speed, RPM (Ceramic-Coated)	50 up to 1400
Display resolution °C	1
Max. plate temp. °C	Ceramic 450°C, Ceramic Coated Alum 325°C
Connection for Ext. temperature sensor	PT100 temperature probe (included)
Control accuracy with probe °C	±1°C
Hot warning light	Mains Independent
Programmable	Programmable stopstart & sinusoidal
Available colors	Blue/White
Net weight, kg	Ceramic 2.68 kg, Ceramic Coated Alum 2.73 kg
Overall dimensions (w x d x h)	180 x 300 x 93
Electrical supply	120V, 60Hz or 230V, 50Hz

As the hot plate heats the sample to the set temperature, the advanced control algorithm automatically measures the rate of temperature rise to judge the capacity and nature of samples (e.g. oil or aqueous). It then optimises the heating rate to minimize overshoot and time to set point. An audible alert sounds when the set temperature has been reached. There is the ability to create programs, controlling the temperature. Individual customer temperature profiles can be created and saved to the unit allowing for fast set up of complicated experimental procedures, without tying the user to the unit adjusting settings for a prolonged period of time. The unit is supplied with a PTFE coated temperature probe, which when immersed within the sample allows accurate sample temperature control to within ±1°C.

### Ordering Information

Description	Ordering Number	Series No.	Model No.	Legacy Sku.
Small Metal Hot Plate, Premium, Blue	04806-65	SHP-400	SHP-400-8S	SP1528
Small Metal Hot Plate, Premium, Blue, 120V, 60Hz	04806-64	SHP-400	SHP-400-8S-120	SP1528/120
Small Metal Hot Plate Premium, White	04806-67	SHP-400	SHP-400-WS	SP152W
Small Metal Hot Plate, Premium, White, 120V, 60Hz	04806-66	SHP-400	SHP-400-WS-120	SP152W/120
Small Ceramic Hot Plate, Premium, Blue	04806-81	SHP-400	SHP-400-BC	CP1528
Small Ceramic Hot Plate, Premium, Blue, 120V, 60Hz	04806-80	SHP-400	SHP-400-BC-120	CP1528/120
Small Ceramic Hot Plate, Premium, White	04806-83	SHP-400	SHP-400-WC	CP152W
Small Ceramic Hot Plate, Premium, White, 120V, 60Hz	04806-82	SHP-400	SHP-400-WC-120	CP152W/120



# Cole-Parmer®

## Cole-Parmer® Premium Hot Plate HP-400

- Hot surface warning light flashes when plate temperature is above 50°C
- Durable front panel resists spills and chemicals
- Available in various colors





## Cole-Parmer® Premium Hot Plate HP-400

The Cole-Parmer® HP-400 Premium Hot Plates have been designed to seamlessly blend scientific precision with contemporary styling, to meet the day to day needs of today's scientific professionals and students. A simple clean body allows for any spillages to be easily deflected from the user. A spill-resistant front control module with chemically toughened glass, means you can clearly see what's going on without fear of cosmetic damage to the unit. The mains independent "Hot" warning light will flash whenever the plate temperature is above 50 °C even when the hotplate is turned off and unplugged from the mains. All models have an integral fixing point for a retort rod.

Premium units feature a digital temperature setting, set and then actual temperature are shown on the seven segment digital display. Where accurate sample temperature control is required, the PT100 probe included with the hotplate can be used. Ceramic units offer excellent chemical resistance and are easy to clean. The thermal properties of a ceramic surface allow very high plate temperatures, while cool edges reduce the chance of accidental burns. Ceramic coated aluminium surfaces offer a robust top plate with excellent heat transmission. The top plate has a thin ceramic coating for added chemical resistance. A 700W element gives rapid heating and ensures even temperature distribution across the whole surface of the plate. The entire Cole-Parmer® range is protected by BioCote® antimicrobial protection.

### Technical Specification

Specification	HP-400
Plate material	Aluminium silicon alloy
Plate dimensions, mm	150x150
Heated area, mm	150x150
Heater power, W	700
Display resolution °C	1
Max. plate temp. °C	325
Connection for Ext. temperature sensor	PT100 temperature probe (included)
Control accuracy with probe °C	± 1 °C
Hot warning light	Mains Independent
Programmable	Yes
Available colors	White/Blue
Net weight, kg	2.5 kg
Overall dimensions (w x d x h)	180 x 300 x 93
Electrical supply	120V, 60Hz or 230V, 50Hz

### Ordering Information

Description	Ordering Number	Series No.	Model No.	Legacy Sku.
Small Metal Hot Plate, Premium, Blue	04806-49	HP-400	HP-400-8	SP150B
Small Metal Hot Plate, Premium, Blue 120V	04806-48	HP-400	HP-400-8-120	SP1508/120
Small Metal Hot Plate, Premium, White	04806-51	HP-400	HP-400-W	SP150W
Small Metal Hot Plate, Premium, White 120V	04806-50	HP-400	HP-400-W-120	SP150W/120


# Cole-Parmer® Heating Blocks for Hot Plates and Stirring Hot Plates



Turn your existing 6" x 6" hot plate into a heating mantle

- Safest way to heat round-bottom flasks
- Flexible modular system for a wide range of sizes up to 500 mL
- Low-well design is perfect for multi-neck flasks

Designed to heat round-bottom flasks, the heating block system with interchangeable inserts can be used with various Cole-Parmer hot plates and hot plate stirrers with 6" x 6" top plate. The heating block system offers two sizes of base plates (small and medium) which can accommodate up to three block inserts each. A third larger base plate features heat-resistant handles and accepts a single block insert for flasks up to 500 mL. Chemical- and solvent-resistant anodized block inserts provide a safe method for synthesis of single or multiple reactions and offer equal or better heating performance than silicon oil. The low-well provides excellent temperature transfer without compromising the view of the reaction or risk of cracking the glassware. Each base plate features a hole to house a temperature controller probe.



item	Description
<div data-bbox="124 1648 256 1771"></div> <div data-bbox="256 1648 432 1682">EW-04805-62</div>	<div data-bbox="708 1682 1118 1742">Heater Block Base for Hot Plate or Stirring Hot Plate, Large</div>



item	Description
<div data-bbox="126 253 256 376" data-label="Image"> </div> <div data-bbox="256 253 432 286" data-label="Text"> <p>EW-04805-70</p> </div>	<div data-bbox="703 282 1098 349" data-label="Text"> <p>Heater Block Base for Hot Plate, Small</p> </div>
<div data-bbox="126 685 256 808" data-label="Image"> </div> <div data-bbox="256 685 432 719" data-label="Text"> <p>EW-04805-71</p> </div>	<div data-bbox="703 714 1129 781" data-label="Text"> <p>Heater Block Insert for Large Base, 100 mL, 1/EA</p> </div>
<div data-bbox="126 1117 256 1240" data-label="Image"> </div> <div data-bbox="256 1117 432 1151" data-label="Text"> <p>EW-04805-72</p> </div>	<div data-bbox="703 1146 1133 1180" data-label="Text"> <p>Heater Block Clamp for Small Base</p> </div>
<div data-bbox="126 1547 256 1671" data-label="Image"> </div> <div data-bbox="256 1547 432 1581" data-label="Text"> <p>EW-04805-74</p> </div>	<div data-bbox="703 1579 1082 1646" data-label="Text"> <p>Heater Block Insert for Small &amp; Medium Bases, 100 mL, 3/PK</p> </div>

item	Description
<div data-bbox="124 253 256 376" data-label="Image"> </div> <div data-bbox="256 253 681 286" data-label="Text"> <p>EW-04805-75</p> </div>	<div data-bbox="703 286 1077 349" data-label="Text"> <p>Heater Block Insert for Small &amp; Medium Bases, 10 mL, 3/PK</p> </div>
<div data-bbox="124 685 256 808" data-label="Image"> </div> <div data-bbox="256 685 681 719" data-label="Text"> <p>EW-04805-76</p> </div>	<div data-bbox="703 719 1120 781" data-label="Text"> <p>Heater Block Base for Hot Plate or Stirring Hot Plate, Medium</p> </div>
<div data-bbox="124 1117 256 1240" data-label="Image"> </div> <div data-bbox="256 1117 681 1151" data-label="Text"> <p>EW-04805-77</p> </div>	<div data-bbox="703 1151 1128 1214" data-label="Text"> <p>Heater Block Insert for Large Base, 250 mL, 1/EA</p> </div>
<div data-bbox="124 1547 256 1671" data-label="Image"> </div> <div data-bbox="256 1547 681 1581" data-label="Text"> <p>EW-04805-78</p> </div>	<div data-bbox="703 1581 1090 1644" data-label="Text"> <p>Heater Block Clamp for Medium Base</p> </div>

item	Description
<div data-bbox="124 250 256 376" data-label="Image"> </div> <div data-bbox="256 250 432 282" data-label="Text"> <p>EW-04805-83</p> </div>	<div data-bbox="703 282 1080 344" data-label="Text"> <p>Heater Block Insert for Medium Base, 250 mL, 3/PK</p> </div>
<div data-bbox="124 683 256 806" data-label="Image"> </div> <div data-bbox="256 683 432 714" data-label="Text"> <p>EW-04805-85</p> </div>	<div data-bbox="703 714 1080 777" data-label="Text"> <p>Heater Block Insert for Small &amp; Medium Base, 25 mL, 3/PK</p> </div>
<div data-bbox="124 1115 256 1238" data-label="Image"> </div> <div data-bbox="256 1115 432 1146" data-label="Text"> <p>EW-04805-87</p> </div>	<div data-bbox="703 1146 1129 1209" data-label="Text"> <p>Heater Block Insert for Large Base, 500 mL, 1/EA</p> </div>
<div data-bbox="124 1543 256 1668" data-label="Image"> </div> <div data-bbox="256 1543 432 1574" data-label="Text"> <p>EW-04805-89</p> </div>	<div data-bbox="703 1574 1129 1637" data-label="Text"> <p>Heater Block Insert for Large Base, 50 mL, 1/EA</p> </div>

item	Description
 EW-04805-97	Heater Block Insert for Small & Medium Bases, 50 mL, 3/PK
 EW-04805-98	Heater Block Insert for Small & Medium Bases, 5 mL, 3/PK


# Cole-Parmer® Heating Block Kits for Hot Plates and Stirring Hot Plates






Turn your existing 6" x 6" hot plate into a heating mantle

- Safest way to heat round-bottom flasks
- Flexible modular system for a wide range of sizes up to 500 mL
- Low-well design is perfect for multi-neck flasks

Designed to heat round-bottom flasks, the heating block system with interchangeable inserts can be used with various Cole-Parmer hot plates and hot plate stirrers with 6" x 6" top plate. The heating block system offers two sizes of base plates (small and medium) which can accommodate up to three block inserts each. A third larger base plate features heat-resistant handles and accepts a single block insert for flasks up to 500 mL. Convenient starter kits feature a base plate with a selection of heating block inserts in various sizes. Chemical- and solvent-resistant anodized block inserts provide a safe method for synthesis of single or multiple reactions and offer equal or better heating performance than silicon oil. The low-well provides excellent temperature transfer without compromising the view of the reaction or risk of cracking the glassware. Each base plate features a hole to house a temperature controller probe.

item	Description
 EW-04805-67	Heater Block Kit for Hot Plate or Stirring Hot Plate, Large

item	Description
 EW-04805-73	Heater Block Kit for Hot Plate or Stirring Hot Plate, Small, 25/50/100 mL
 EW-04805-79	Heater Block Kit for Hot Plate or Stirring Hot Plate, Medium, 3x250 mL
 EW-04805-81	Heater Block Kit for Hot Plate or Stirring Hot Plate, Medium, 100/250 mL



## По вопросам продаж и поддержки обращайтесь:

Алматы (727)345-47-04  
Ангарск (3955)60-70-56  
Архангельск (8182)63-90-72  
Астрахань (8512)99-46-04  
Барнаул (3852)73-04-60  
Белгород (4722)40-23-64  
Благовещенск (4162)22-76-07  
Брянск (4832)59-03-52  
Владивосток (423)249-28-31  
Владикавказ (8672)28-90-48  
Владимир (4922)49-43-18  
Волгоград (844)278-03-48  
Вологда (8172)26-41-59  
Воронеж (473)204-51-73  
Екатеринбург (343)384-55-89

Иваново (4932)77-34-06  
Ижевск (3412)26-03-58  
Иркутск (395)279-98-46  
Казань (843)206-01-48  
Калининград (4012)72-03-81  
Калуга (4842)92-23-67  
Кемерово (3842)65-04-62  
Киров (8332)68-02-04  
Коломна (4966)23-41-49  
Кострома (4942)77-07-48  
Краснодар (861)203-40-90  
Красноярск (391)204-63-61  
Курск (4712)77-13-04  
Курган (3522)50-90-47  
Липецк (4742)52-20-81

Магнитогорск (3519)55-03-13  
Москва (495)268-04-70  
Мурманск (8152)59-64-93  
Набережные Челны (8552)20-53-41  
Нижегород (831)429-08-12  
Новокузнецк (3843)20-46-81  
Ноябрьск (3496)41-32-12  
Новосибирск (383)227-86-73  
Омск (3812)21-46-40  
Орел (4862)44-53-42  
Оренбург (3532)37-68-04  
Пенза (8412)22-31-16  
Петрозаводск (8142)55-98-37  
Псков (8112)59-10-37  
Пермь (342)205-81-47

Ростов-на-Дону (863)308-18-15  
Рязань (4912)46-61-64  
Самара (846)206-03-16  
Санкт-Петербург (812)309-46-40  
Саратов (845)249-38-78  
Севастополь (8692)22-31-93  
Саранск (8342)22-96-24  
Симферополь (3652)67-13-56  
Смоленск (4812)29-41-54  
Сочи (862)225-72-31  
Ставрополь (8652)20-65-13  
Сургут (3462)77-98-35  
Сыктывкар (8212)25-95-17  
Тамбов (4752)50-40-97  
Тверь (4822)63-31-35

Тольятти (8482)63-91-07  
Томск (3822)98-41-53  
Тула (4872)33-79-87  
Тюмень (3452)66-21-18  
Ульяновск (8422)24-23-59  
Улан-Удэ (3012)59-97-51  
Уфа (347)229-48-12  
Хабаровск (4212)92-98-04  
Чебоксары (8352)28-53-07  
Челябинск (351)202-03-61  
Череповец (8202)49-02-64  
Чита (3022)38-34-83  
Якутск (4112)23-90-97  
Ярославль (4852)69-52-93

**Россия** +7(495)268-04-70

**Казахстан** +7(727)345-47-04

**Беларусь** +(375)257-127-884

**Узбекистан** +998(71)205-18-59

**Киргизия** +996(312)96-26-47

эл.почта: [cen@nt-rt.ru](mailto:cen@nt-rt.ru) || сайт: <http://coleparmer.nt-rt.ru/>